

AOEC NEWS

Newsletter of the Association of Occupational and Environmental Clinics

Winter 2003 ♦ Vol. 10 Issue 2

PRESIDENTIAL COLUMN ♦ ANTHONY SURUDA, MD, MPH

I'm pleased to serve as AOEC president and look forward to working with Kathy Kirkland and the board. Occupational and environmental health issues should be prominent in the news in the aftermath of 9/11 and bioterrorism. AOEC will play a major role in the WTC medical screening (see p.3).

Congratulations to our new elected officers: Denny Dobbin, CIH, MSC-OH (President-elect), Ed Doyle, MD, MSc (Treasurer) and to Mary Cook (Secretary). New board members for 2003 are individual board representatives: John Meyer, MD, MPH (University of Connecticut) and Karen Mulloy, DO, MPH (University of New Mexico) and Cile Buckley, CIH who is the clinic representative for Cook County Hospital. I'd like to thank Grace Paranzino for her great job as president. Grace took the lead on the initiative to ensure multi-disciplinary representation on the AOEC board and was instrumental in developing the collaborative workshop on Environmental Health Promotion with ATSDR and the University of Nevada-Las Vegas which will be held May 19-21.

Occupational Medicine (OM) residency directors should be aware that AOEC has funding available for resident travel to rotations at NIOSH in the amount of up to \$2,500 monthly for lodging and living expenses including round trip air fare or mileage. At the University of Utah OM residents took advantage of this funding for rotations in Cincinnati and in Morgantown, WV. NIOSH also has an office in Anchorage, AK and the director Dr. George Conway has indicated that residents are welcome there to work on safety-related projects. Both Kathy and I would be glad to answer any queries regarding funding for resident rotations.

January 8-10 the *New York Times* published a series of articles about environmental and worker safety problems at McWane, Inc. a large manufacturer of cast-iron water and sewer pipes. The articles describe how the company employed "workers compensation cost

control techniques" including selection of an occupational health clinic which was most responsive to management requests to minimize attribution of injury to work-related causes. For those in clinical practice, does this sound familiar? By practicing ethically and "calling it like we see it" our member clinics can't compete in this environment without effective regulation and oversight by OSHA and by state insurance agencies.

One of AOEC's long term goals is to broaden our funding base. At the spring board meeting we'll be discussing projects in occupational and environmental health for which we might approach foundations and other private parties for sponsorship. Examples of possible projects are sponsorship of faculty or graduate students for independent study as was done in the Great Lakes Scholars program. If you have any suggestions for projects of regional or national interest, please contact me at tonysuruda@aol.com or via the AOEC office.

➤Please join us in welcoming two clinics to AOEC

Center for Preventive, Occupational and Environmental
Medicine
Department of Family and Preventive Medicine
University of Arkansas for Medical Sciences
521 South Elm Street
Little Rock, AR 72205
501-686-6565 FAX 501-296-1230
Contact: Andrew Prychodko, MD, MPH, JD

CISTE/ Inter-University Occupational and Environmental
Health Clinic
Montreal Chest Institute Ambulatory Clinic
3666 St-Urbain
Montreal, PQ, CD H2X 2P4
514-849-5201 FAX 514-843-2070
Contacts: Louis Patry, MD, FRCP (C), Director
Julie Dallaire, RN, MSc

IN THE ISSUE

Member News.....	2
WTC Medical Screening Program...	3
PEHSU Update.....	4

Migrant Clinicians Network.....	5
Upcoming Events.....	6
Opportunities.....	7

AOEC BOARD OF DIRECTORS 2002-2003

President

Anthony Suruda, MD, MPH
Rocky Mountain Center for Occupational and
Environmental Health
801-581-3841 FAX 801-581-7224
tonysuruda@aol.com

Vice- President

Denny Dobbin, CIH, MSC-OH
Chapel Hill, NC
919-968-6073
rdobbin@worldnet.att.net

Treasurer

Edward Doyle, Jr., MD, MSc
West Virginia University
304-293-3693 FAX 304-293-2629
edoyle@wvu.edu

Secretary

Mary Cook, Managing Director
Occ. Health Clinics for Ontario Workers
416-443-7669 FAX 416-443-6323
mcook@ohcow.on.ca

Past-President

Grace Paranzino, MPH, RN, CHES, FAAOHN
Drexel University College of Medicine
215-991-8469 FAX 215-843-6028
paranzino@drexel.edu

Members

Karen Mulloy, DO, MSCH
University of New Mexico
505-272-2900 FAX 505-272-2909
kmulloy@salud.unm.edu

John Meyer, MD, MPH
University of Connecticut
860-679-2893 FAX 860-679-1349
meyer@uchc.edu

Marie Diven Stelutti
Mount Sinai-Irving J. Selikoff Center for
Occupational and Environmental Medicine
212-241-0176 FAX 212-996-0407
marie.stelutti@mssm.edu

Cile Buckley, CIH
Cook County Hospital
312-633-5310 FAX 312-633-6442
cilbuck@aol.com

*The AOEC News is published by the Association of
Occupational and Environmental Clinics,
1010 Vermont Ave., NW, Suite 513,
Washington, DC 20005.*

*Editor: Katherine Kirkland, Executive Director.
Comments and questions should be directed to the
AOEC office at 202-347-4976, FAX 202-347-4950,
e-mail kkirkland@aoec.org; internet: www.aoec.org*

AOEC MEMBER NEWS

➤ As part of our ongoing outreach to health professionals, AOEC will sponsor two workshops on how to take an occupational/environmental exposure history at the 51th annual convention of the National Student Nurses' Association (NSNA) on April 23-27, 2003 in Phoenix, AZ. AOEC member, **Barbara Coyle, RN, COHN-S** will present both sessions. Ms. Coyle was selected by a selection committee of nurses from a group of applicants who responded to the Request For Proposal posted last fall. If you or your students plan to attend the convention, make sure to add this session to your schedule.

➤ Several studies have recently emphasized the need for renewed attention to the manner in which we address health risks from our environment identifying issues and recommendations that should be carefully considered. Through its cooperative agreement with the Agency for Toxic Substance and Disease Registry, AOEC is collaborating with the Center for Health Promotion, University of Nevada, Las Vegas in conducting a workshop (closed) on Environmental Health Promotion, May 19-21, 2003 in Las Vegas, NV. **Cynthia Lewis-Younger, MD, MPH** is the recipient of the award to author and present the paper, *Challenges Faced by Health Care Professionals in Developing and Conducting Environmental Health Interventions*, with co-authors, Grace Paranzino, MS, RN, CHES, FAAOHN and Katherine Kirkland, MPH.

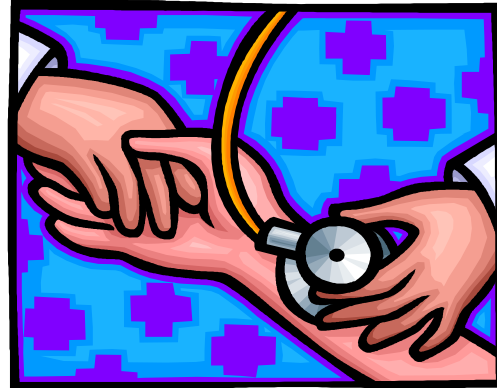
NEWLY RELEASED

In preparing the nation's primary health care providers to recognize and effectively treat pesticide toxicity, The National Environmental Education & Training Foundation (NEETF) released national pesticide competency and practice skills guidelines for physicians and nurses—part of NEETF's 10-year National Strategies for Health Care Providers: Pesticides Initiative.

The companion documents, *National Pesticide Competency Guidelines for Medical & Nursing Education* and *National Pesticide Practice Skills Guidelines for Medical & Nursing Practice*, were developed specifically for everyday, front-line health care professionals. Both documents are available online at www.neetf.org/health/providers/index.shtm. For more information, contact: The National Environmental Education & Training Foundation, National Strategies for Health Care Providers: Pesticides Initiative; 1707 H St., NW, Ste. 900, Washington, DC, 20006-3915; 202-833-2933, x535; pesticides@neetf.org.

WORLD TRADE CENTER WORKER & VOLUNTEER MEDICAL SCREENING PROGRAM (WTC PROGRAM)

Mount Sinai-Irving J. Selikoff Center for Occupational and Environmental Medicine at Mount Sinai Medical Center, has been conducting screening of World Trade Center Workers since July. On January 27, 2003, the results of their findings on a random sample of 250 of the first 500 people screened were released. An analysis of the physical examination findings, symptoms and hazardous exposures documents that approximately half of the sample experienced persistent WTC-related pulmonary, ENT and/or mental health symptoms 10 months to one year following the New York terrorist attacks. These results indicate the need for medical treatment and a long-term monitoring program.



AOEC member clinics have an integral role in this project. There is a consortium of five clinics seeing 8,000 workers/volunteers in the New York metropolitan area which includes three AOEC member clinics: Mount Sinai, the Environmental and Occupational Health Sciences Institute and the New York University/Bellevue Hospital Occupational and Environmental Medicine Clinic.

In addition to the work within the metropolitan area, AOEC was requested to be the provider for up to 1,000 clinical evaluations throughout the US. This opportunity is open only to member clinics and already encompasses clinics from all corners of the US. While most clinics will see only a few patients, several are gearing up to see a significant numbers. The University of Cincinnati Center for Occupational Health has been requested to see members of the Ohio Urban Search and Rescue Task Force 1. The task force had over 70 members at the WTC site for over a week following 9-11.

If you have workers or volunteers in your area who were present at the WTC site after 9-11 and were involved in rescue, recovery or restoration of services, they may be eligible for the screening program. They need not be symptomatic but do need to call the WTC Hotline at 1-888-702-0630) to determine eligibility.

CDC CLINICIAN COMMUNICATION CALLS

AOEC has participated in CDC Clinician Communication calls since last November. These calls are held once a month to provide associations such as the American College of Occupational and Environmental Medicine, the American Hospital Association, the Pharmaceutical Research and Manufacturers of America, the American Association of Occupational Health Nurses, etc. with an opportunity to be briefed on the latest government policies such as smallpox vaccination programs. It also provides a forum to ask questions of the CDC.

The CDC Clinician Communication calls are designed to provide rapid communication from CDC to clinicians in a variety of organizations. This works very well for those of our members on e-mail. It does not work as well for those not on e-mail since the calls tend to be announced with very short notice and the opportunity to listen to recordings usually exists for less than seven days following the calls. Those of you not on e-mail or who have decided not to provide your e-mail to AOEC who are interested in learning about these calls as they occur, should notify the AOEC office. We will establish a list of fax and regular mail recipients for the notes on these calls. If there is an emergency situation where CDC needs to disseminate information quickly, all AOEC contact information (phone, fax, e-mail) will be used to ensure that all our members are notified as soon as possible.



For those of you who would like to see the official CDC smallpox information to date, visit the CDC smallpox web site at <http://www.bt.cdc.gov/agent/smallpox/index.asp>

Education of health professionals is the fundamental goal of the PEHSU Program. The 13 PEHSU sites provide clinical education to physicians and other health professionals by telephone consultation and by conducting lectures in medical settings or community based events. The AOEC staff is in the process of evaluating the diversity and content of the PEHSUs' education and outreach activities. For example, the Texas PEHSU site has conducted many educational presentations by using distance learning techniques. This is an effective method to reach health professionals in the vast southwest region. The following are highlights about this Texas PEHSU site.



PEHSU SPOTLIGHT



*Southwest Center
Pediatric Environmental Health*

The Southwest Center for Pediatric Environmental Health (SWCPEH) at The University of Texas Health Center at Tyler (UTHCT), was established in August 2000 and provides educational and consultative services throughout region VI (Texas, Arkansas, Louisiana, Oklahoma, and New Mexico). The SWCPEH is formally partnered with the New Mexico Program on Occupational and Environmental Medicine, an AOEC clinic headed by Dr. Karen Mulloy. SWCPEH is currently receiving poison center data from all states within the region except Oklahoma. The Occupational Health Sciences and the Pediatrics departments collaborate to answer questions and develop presentations related to children's environmental health. The program is co-directed by Drs. Jeffrey Levin and Larry Lowry and features Dr. Debra Cherry as its medical consultant. Dr. Cherry is board certified in occupational medicine but also has residency training in pediatrics.

The strength of the SWCPEH is its educational outreach. Faculty has given more than 50 presentations to wide variety of audiences in all states within the region. Highlights include a half-day conference on indoor molds in September 2001 and a half-day session on pediatric environmental health at the annual meeting of the Texas Pediatric Society in September 2002.

A variety of calls are received from parents, healthcare providers, and public health officials and the center continues to receive many inquiries about indoor molds following the many floods that have occurred in Texas over the last year.

SWCPEH has also been involved in some challenging lead cases unrelated to lead-based paint. The lead sources were occupational take-home exposure related to trophy polishing in one case and suspected maternal exposure during pregnancy in another case. Calls related to rural families including concerns for contaminated well water and use of pesticides in sugar cane fields have also been received.

The purpose of the PEHSU program has been to bring together pediatrics

and environmental health professionals. Two SWCPEH pediatricians have made major presentations on pediatric environmental health issues to peers, including one invited presentation: "Kids in the Country---and I am not talking goats" presented in Washington, DC as well as at pediatric grand rounds in Fall 2002 by Dr. Barbara Huggins. The interaction of specialties has been fostered through quarterly pediatric-occupational and environmental health case conferences.

Future areas of concern to the SWCPEH are health issues along the Mexico-Texas-New Mexico Border. Several presentations have been held in the El Paso area including two conferences supported by Texas Tech and presentations to the New Mexico Border Health Office in Las Cruces. SWCPEH is actively exploring expanded relationships with the PEHSU in Cuernavaca, Mexico as well as New Mexico member clinic to establish a satellite office in the Paso del Norte area of West Texas - Southern New Mexico- Northern Mexico. The presence of an actual unit will require additional funding from any one of a variety of sources.

SWCPEH has tried to turn its small, rural location to its advantage. For instance, there is emphasis on relationships within the 5-state region and Mexico rather than focusing on Tyler, TX. Use of the televideo network allows SWCPEH to broadcast presentations to a variety of remote locations as well as communicate with major urban centers. Co-director, Dr. Jeff Levin, also directs the Southwest Center for Agricultural Health, which provides a special avenue for SWCPEH to address agricultural environmental concerns, such as pesticide safety for migrant farm children. SWCPEH has several bilingual faculty members, who enhance their ability to serve the Mexican-American community. SWCPEH has made great strides in the last two years, and have tremendous opportunities to impact children's health in the future.

>For more information about the Southwest PEHSU, call 1-888-901-5665 or visit <http://research.uthct.edu/swceph>.



VIEW FROM VERMONT AVE. – KATHERINE H. KIRKLAND, EXECUTIVE DIRECTOR

With the new Republican majority in both houses, one issue that will be coming before the Congress this year is asbestos compensation. This is the follow-up to the 2000 Fairness in Asbestos Legislation that didn't get passed. AOEC was very involved in activity on that bill due to the incredibly bad definitions of asbestosis and other clinical issues within the bill. The new legislation being considered has not been finalized so there is time for AOEC to weigh in with a clinical perspective. This year's efforts promise to be different. The leading proponents for reform are Sen. Orrin Hatch (R-UT) and Sen. Patrick Leahy (D-VT). The AFL-CIO has also gotten involved early in discussions since many of the sickest asbestos exposed workers are not able to get compensated due to the congestion in the courts. If you are interested in reviewing possible clinical definitions for the upcoming legislation, please contact me at the AOEC office. We are putting together an AOEC advisory panel on this issue.

It is no surprise that with rare exceptions unless an agency deals with defense or homeland security, its funding will be cut in this year's budget. The National Institute for Occupational Safety and Health (NIOSH) and the Agency for Toxic Substances and Disease Registry (ATSDR) are no exception. It looks like NIOSH may be asked to absorb a 10% cut overall for this year and a 1% cut for 2004. The Occupational Safety and Health Administration (OSHA) fares a little better with a 4% cut this year and a slight increase for 2004. The ATSDR budget is harder to categorize. While it will be down slightly this year, there is a memorandum of understanding in place to merge ATSDR with the National Center for Environmental Health. If that merger takes place this year, it will take a better crystal ball than mine to determine what will happen to funding for the combined agencies.

MIGRANT CLINICIANS NETWORK – AMY LIEBMAN, MPA, MA

Last year, AOEC entered into a Memorandum of Understanding with the MCN for the purpose of addressing the environmental and occupational health problems of farmworkers and their families by providing training, technical assistance and educational resources to the clinicians who serve them.



The Migrant Clinicians Network (MCN) is a national clinical network of health care providers who serve migrant farmworkers and other underserved mobile populations. Established in 1984 by a group of front-line clinicians who felt the need for a national network to support providers, raise awareness of farmworker issues, and link clinical migrant resources around the country, MCN now has over 2,000 members. MCN offers a professional home for clinicians to provide opportunities for networking and professional development, advance clinical effectiveness by conducting research and developing clinical tools, and act as a national and international voice on migrant health issues through leadership, advocacy and partnership with collaborating agencies.

MCN recognizes that the needs of farmworkers, clinicians, and clinics vary considerably based on geographic location, levels of program development, the demographics of the population served, and the availability of other resources. Accordingly, MCN has developed a variety of services to accommodate a diversity of needs: the seasoned clinician, clinicians new to migrant health, those uninvolved but interested in migrant health, health centers struggling to establish basic services, or those with a long history of successful work with migrant farmworkers. MCN is involved with numerous education, research and policy efforts and offers its memberships a variety of publications including *Streamline*, a bimonthly newsletter. Additionally, MCN offers programs and services to address specific needs of clinicians and farmworkers. Some of the programs MCN is facilitating include Domestic Violence, Medical Records Assistance, Tuberculosis, Diabetes, Health Disparities Collaboratives as well as an Environmental and Occupational Health program.

MCN's environmental and occupational health program aims to reduce risks associated with environmental and occupational hazards for migrant and seasonal farmworkers by increasing the capacity and improving the practices of clinicians serving farmworkers and their families. Specifically, MCN is trying to (1) raise primary health care providers' index of suspicion regarding occupational and environmental causes of health problems, and (2) provide health care providers with tools and resources to address these health problems. To learn more about MCN visit: www.migrantclinician.org.

➤ *Amy K. Liebman, MPA, MA is an Environmental Health Specialist for MCN.*

COURSES & UPCOMING EVENTS

March 2003

▶ NIOSH approved Spirometry Course, March 17-19, 2003, Pittsburgh, PA. Contact: Dr. Mary Townsend, 412/343-9946 or visit www.mctownsend.com. Other dates: April 8-10, June 2-4, 2003.

▶ The conference, Work, Stress, and Health: New Challenges in a Changing Workplace, will be held at the Sheraton Hotel, Toronto, Ontario, on March 20-22, 2003, sponsored by the American Psychological Association (APA), the National Institute for Occupational Safety and Health (NIOSH), and the School of Business, Queen's University. Contact: Wesley B. Baker, Conference Coordinator, APA, 750 First Street, NE Washington, DC 20002-4242. Tel: 202-336-6033. Fax: 202-336-6117. Email: wbaker@apa.org

▶ The Ninth Annual Lewis H. Millender MD Occupational Medicine Conference. March 20-21, 2003. Boston Marriott Newton Hotel, Newton, MA. Sponsored by: New England Baptist Hospital and its CareGroup Occupational Health Network. Contact Jamy Gaynor,(617) 754-6780 or Karin Sullivan,(617) 754-6602

▶ March 24-25, 2003, Applying Biomarkers in Occupational Health Practice, Sante Fe, New Mexico, Co-Sponsors: American Industrial Hygiene Association (AIHA), Society for Toxicology National Medical Services, Inc. (NMS). Contact: Connie Kidd, Tel: 513-533-8434. E-mail: ckidd@cdc.gov.

April 2003

▶ Call for Abstracts Deadline: April 2, 2003. 5th International Symposium: Future of Rural Peoples. Sponsored by the Institute of Agricultural Rural and Environmental Health. October 19-23, 2003, Saskatoon, Saskatchewan, Canada. For more information visit <http://iareh.uask.ca>

▶ April 14-16, 2003, Cincinnati, OH. Respiratory Protection Training for Health Professionals. Sponsored by the University of Cincinnati Medical Center. Contact: Roy McKay, PhD, University of Cincinnati Medical Center, P.O. Box 670458, Cincinnati, OH 45267-0458, 513/558-1234, www.DrMcKay.com.

May 2003

▶ May 2-9, 2003, Atlanta, GA. 88th Annual American Occupational Health Conference. Sponsored by the American College of Occupational and Environmental Medicine in conjunction with the American Association of Occupational Health Nurses. Contact: ACOEM, 847/818-1800 or visit www.acoem.org or www.aaohn.org.

June 2003

▶ June 19 - 21 2003, Washington DC. The National Conference on Asthma (Asthma 2003). Asthma 2003 will address the asthma and asthma-related objectives of Healthy People 2010. For more information, visit <http://www.asthma2003.net/about.html>

This item is for the information of colleagues interested in the possibility of establishing or relocating funded activities to Washington DC, which has many advantages for work in risk science. The Dept. of Environmental and Occupational Health, and the Center for Risk Science and Public Health, linked entities in the School of Public Health and Health Sciences, The George Washington Univ. Medical Center, is open to inquiries regarding research faculty appointments in risk science. No new hard money positions are being created at this time but we are open to discussing opportunities with colleagues interested in research faculty positions who have experience and a track record in research compatible with our interests and objectives. Ideally, we would be looking for two future research faculty appointments. One (senior) investigator or experienced risk professional would have the opportunity to take our successful Center for RSPH to the next level, to add disciplinary diversity in risk science and to cultivate a self-directed research program in a supportive environment. We also envision one (mid-level to junior) new investigator to cultivate an emphasis on excellence in risk perception studies and contextual studies in risk communication. ➤ *This is not a position announcement but we affirm our commitment to diversity and equity at GWUMC, which is an Equal Opportunity/ Affirmative Action employer.* Interested parties may contact Dr. Tee L. Guidotti, eohtlg@gwumc.edu.

The **Univ. of Washington - School of Nursing** is seeking a doctorally-prepared **Director of the Occupational Health Nursing program** who provides oversight and leadership to the occupational health nursing program and the NIOSH training grant. Requirements: strong commitment to teaching and demonstrated or potential excellence in research in occupational and/or environmental health. Other responsibilities include teaching in the graduate and undergraduate programs, student advisement and mentoring, serving on academic committees, and professional and community service. Send a letter of interest and CV to: Mary K. Salazar, EdD, RN, Chair, Search Committee, School of Nursing, Box 357263, Univ. of Washington, Seattle, WA 98195-7263, FAX 206-685-0857. Deadline: March 7, 2003. The Univ. of Washington is an AA/EOE.

The School of Public Health at the **Univ. of Illinois at Chicago** seeks a **faculty member** with background/experience and major research interests in the area of Exposure Assessment, Measurement, and Human Health. The position is in the Div. of Environmental and Occupational Health Sciences, appointed jointly with the Institute for Environmental Science and Policy. Appropriate academic/experience backgrounds include environmental epidemiology, toxicology, industrial hygiene, environmental engineering, environmental medicine and behavioral sciences. Candidate will be expected to take a leadership role in organizing multi-disciplinary research on crosscutting environmental themes. Doctoral degree is required, and a demonstrated track record of research funding and peer-reviewed publication preferred. The Univ. of Illinois is an AA/EOE. Deadline: February 28, 2003 or until position is filled. Send letter of interest and CV to: Candy James, School of Public Health, EOHs (M/C 922), Univ. of Illinois at Chicago, 2121 W. Taylor St., Chicago, IL 60612-7260.

The Division of General Medical Sciences at Washington Univ. is seeking **MD or PhD candidates for a tenure-track faculty position**. Qualifications: research training and experience in occupational health epidemiology or health services research related to occupational diseases. Responsibilities include conducting research with both institutional and extramural grant funding. The faculty member may be involved in clinical teaching programs and in part-time clinical practice. We encourage applications from women and minorities. Send CV, cover letter, and (3) references to: Bradley Evanoff, MD, MPH, Director, Div. of General Medical Sciences School of Medicine, Washington Univ. in St. Louis, Campus Box 8005, 660 S. Euclid Ave., St. Louis, MO 63110, 314/454-8638, 314/454-5113, e-mail: bevanoff@im.wustl.edu

The Department of Occupational and Environmental Health at The Univ. of Iowa College of Public Health seeks **tenure track faculty in Industrial Hygiene (IH)** at the level of Professor, Associate Professor or Assistant Professor. Applications may also be considered at the level of Faculty Associate. Requirements: PhD or other doctorate in industrial hygiene, relevant science, engineering field and should also be CIH or in the process of obtaining certification. CSP is desirable. Candidate will be expected to teach graduate courses in IH, direct graduate thesis research, and develop an extramurally-funded research program. Send CV, statement of research interest, and 3 references to: Chair Industrial Hygiene Search Committee (#F2469), c/o Ms. Wendy Jackson, Dept. of Occ. and Env. Health, The Univ. of Iowa, 100 Oakdale Campus, #124 IREH, Iowa City, IA 52242-5000, <http://www.public-health.uiowa.edu>

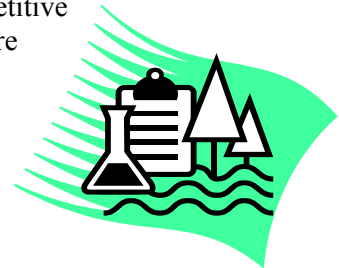
The Department of Occupational Health Sciences at the Univ. of Texas Health Center at Tyler (UTHCT) seeks an **Occupational/Environmental Epidemiologist or Occupational Health Faculty Member** (Asst/Associate Professor level). Candidate will be expected to have commitment to teaching in professional and graduate programs; develop, oversee, and teach a proportion of graduate coursework and thesis research activities for masters level students and occupational medicine residents; and establish an extramurally-funded research program. Qualifications: Doctoral level degree in epidemiology or related field, 3-5 years of teaching experience, track record of competitive research funding. Areas of interest include occupational lung disease and occupational /environmental asthma. E-mail or fax CV and (3) letters of reference to: Jeffrey L. Levin, MD, MSPH, Professor and Chair, Dept. of Occupational Health Sciences, UTHCT, 11927 U.S. Highway 271, Tyler, TX 75708-3154, (903)877-5900, fax (903)877-7982, jeffrey.levin@uthct.edu. UTHCT is an EOE. Minority and female applicants are encouraged to apply.

Department of Internal Medicine at the Univ. of New Mexico School of Medicine, is seeking a **full time faculty member** for the Program in Occupational and Environmental Health. Applicants must be board certified or board eligible in Occupational and Environmental Medicine. Qualifications: Clinical, administrative and teaching experience. Salary and academic rank based on training and experience. Send letter of interest and CV to Pope Moseley, MD, Chairman. Dept. of Internal Medicine, 2211 Lomas NE, ACC 5., Albuquerque, NM 87131. AA/EEO.

OM RESIDENCY POSITION

The Univ. of Pennsylvania (UPenn) Medical Center announces the availability of PGY-2 and PGY-3 residency positions commencing in July 2003. Training is competency based and designed to develop a high degree of skills required for success in occupational and environmental medicine. Up to eight external track supervised practicum year (PGY-3) positions will be available for physicians employed full-time in occupational medicine. Applicants should have substantially completed academic year requirements (MPH or equivalent) and be employed at a location, which offers suitable training opportunities. Other requirements include supervision of the residents by UPenn Occupational Medicine Faculty and monthly visits to Philadelphia by the resident. Training is organized around required professional competencies. The training program is ACGME accredited and is supported by a NIOSH training grant. Partial tuition and travel support may be available, on a competitive basis, to selected applicants through a training grant from NIOSH. Awards are based on criteria of community and personal need.

Internal PGY-2 and/or PGY-3 positions at the UPenn Medical Center will also be available commencing in July 2003. Entry at the PGY-3 level requires prior completion of PGY1 and 2, and MPH or equivalent degree. Residents entering at the PGY-2 level will complete an integrated MPH plus practicum year at UPenn.



UPenn is an AA/EOE. Women and minorities are encouraged to apply. Program information and/or application packages are available from Edward A. Emmett, MD by email: emmetted@mail.med.upenn.edu; 215-349-5708 or fax: 215-662-4430.

AOEC

ASSOCIATION OF OCCUPATIONAL AND ENVIRONMENTAL CLINICS

1010 Vermont Ave., NW
Suite 513
Washington, DC 20005